

GateLite[®]



WELLS



Cover: The Standard at Dinkytown
Minneapolis, MN
System: GateLite

Maeve
Raleigh, NC
System: GateLite



GateLite[®]

A UNITIZED, RESILIENT FACADE SYSTEM FROM WELLS

At Wells, we collaborate with your design team to create inspiring spaces while simplifying complex building challenges. Our revolutionary GateLite facade system achieves this balance by blending aesthetic versatility with performance. Custom design capabilities deliver on your creative vision while an integrated scope unlocks efficiencies and enhances value.



HOW IT ALL COMES TOGETHER

GateLite is a smarter way to bring a building to life, uniting design intent, performance and constructability in one cohesive enclosure solution. Its lean, lightweight architectural concrete skin works with an engineered metal frame, insulation and glazing to establish a fully enclosed building quickly.

BENEFITS

- Prefabricated, unitized system — faster + safer construction
- Reduced structural load + lighter building envelope
- Energy efficiency, thermal + environmental performance
- Design flexibility + architectural versatility
- Single-source responsibility + quality control

FEATURES

Core System Architecture + Components

- Unitized panel system
- Steel frame
- Integrated Insulation
- Pre-designed connections

Design Flexibility + Aesthetic Options

- Exterior finishes + materials
- Complex shaping + articulation
- High window-to-wall ratios
- Flexibility

Performance + Sustainability

- Lightweight
- Energy efficient
- Reduced embodied carbon
- Increased durability
- Single-source responsibility



AESTHETIC FLEXIBILITY

GateLite supports architectural vision without compromise. The system accommodates a wide range of materials, finishes and expressions, giving design teams the freedom to achieve distinctive aesthetics while maintaining a cohesive, high-performing enclosure.



REDUCED STRUCTURAL DEMANDS

Engineered as a lean, lightweight enclosure solution, GateLite helps reduce overall structural load requirements. By minimizing weight without sacrificing performance, the system can unlock efficiencies across the building structure.



SEAMLESS SYSTEM INTEGRATION

GateLite is designed to work in concert with adjacent building systems. From structure to insulation to glazing, GateLite simplifies detailing to support smooth transitions from design through installation.



A SAFER JOBSITE

Our delivery approach keeps the work of multiple trades offsite in a safe, controlled environment. The system is engineered with resilient materials, arriving on site complete and ready for installation, mitigating disruption, congestion, and risk.



GREATER CONSTRUCTION EFFICIENCY

Merging expertise across multiple disciplines, we crafted this solution to bring unmatched efficiency to your project, reducing on-site labor and expediting the build, cutting months off traditional build schedules.



AN ACCOUNTABLE PARTNER

Wells handles everything from conceptual design to project closeout, ensuring greater cost and quality certainty while reducing scope gaps. One trade partner. One contract. One warranty.



COMMITTED TO SUSTAINABILITY

Aligned to your sustainability goals, we engineered GateLite to lower the environmental impact of your project. The lightweight consolidated system uses less cement than traditional systems while minimizing construction waste, rework, and delivery emissions.

Intermountain Health Lutheran MOB
Wheat Ridge, CO
System: GateLite



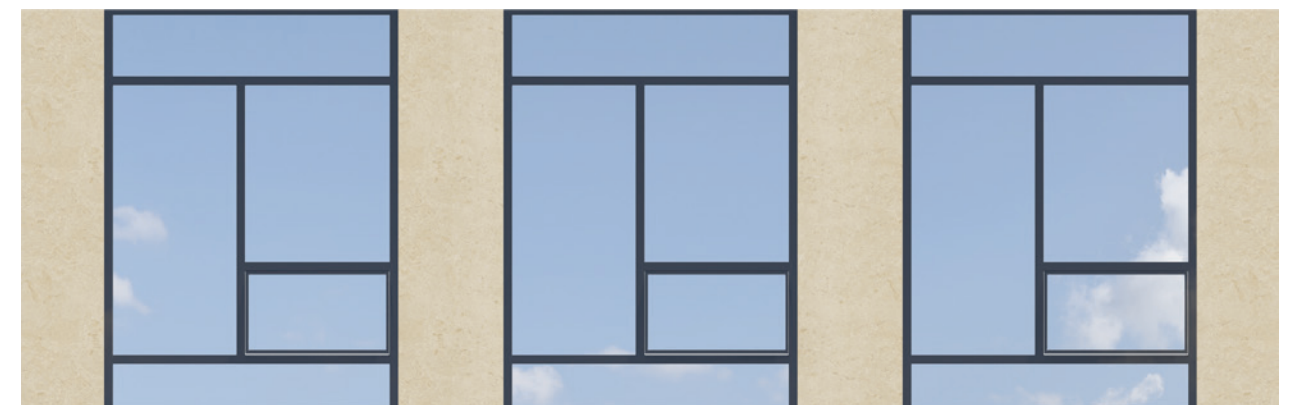
DESIGN FREEDOM WITH PRE-INSTALLED GLAZING

With GateLite, windows are pre-installed in a controlled manufacturing environment, delivering consistent quality while reducing on-site coordination, waste and rework.

A lightweight engineered metal frame supports expansive openings and maximizes window-to-wall ratios, enabling large, high-performance glazing without compromising structural integrity. By manufacturing the complete enclosure off-site and delivering it as one coordinated solution, GateLite accelerates building enclosure, reduces risk and brings clarity and confidence to the design and construction process.



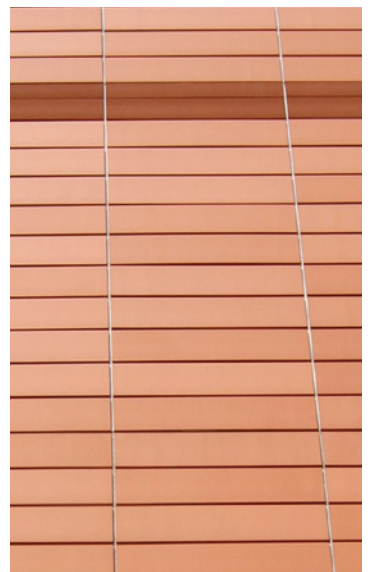
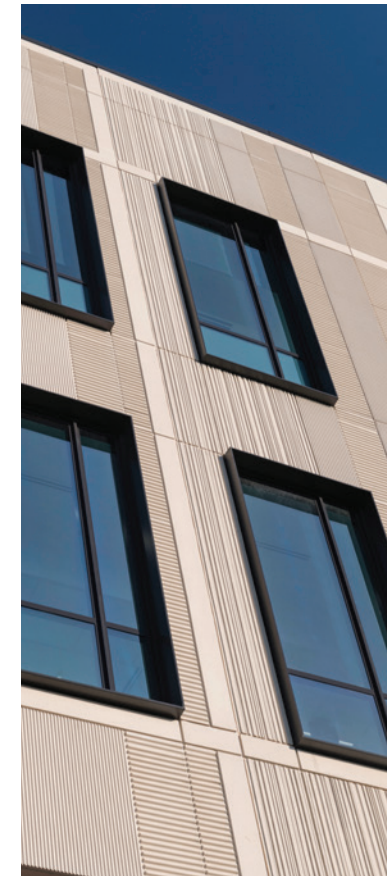
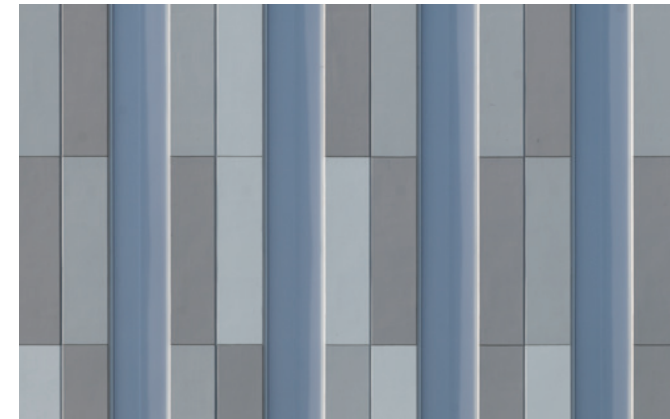
Kahlert Foundation Complex
Columbia, MD
System: GateLite



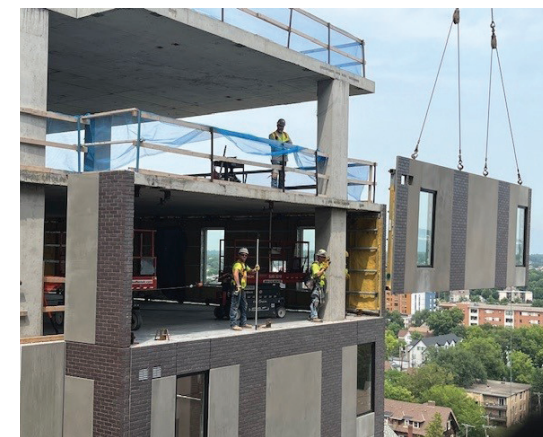
VISUAL IMPACT MEETS VALUE

Gatelite articulates your vision with options tailored to your architectural goals and budget. Everything from color and finish to design features and windows can be adjusted to optimize the build.

Gatelite is designed to elevate every detail of your architectural expression with expansive finishes, materials, and custom design capabilities. Paired with guidance from an expert team, the solution integrates into a variety of structural systems and flexes to uphold your design intent.



—
With limitless finish options, including thin brick and stone, design freedom comes with a lighter environmental footprint.



THE STANDARD AT DINKYTOWN

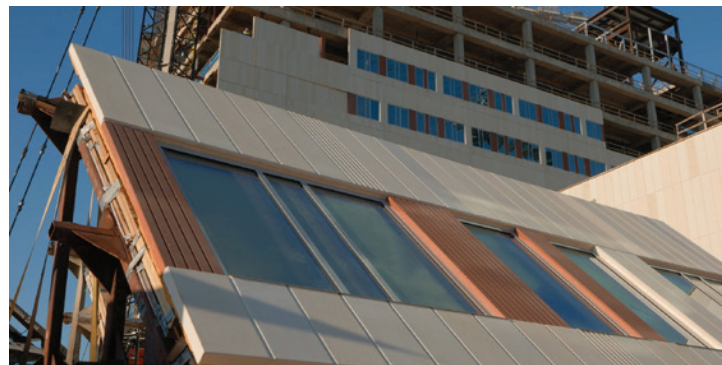
Minneapolis, MN

- 17-story PT superstructure
- Full wrap enclosure
- 775 panels // 158,137 GSF
- 1,251 integrated windows
- 111 installation days

BAPTIST HOSPITAL CAMPUS

Pensacola, FL

- 10-story hospital tower
- 6-story health center
- 57-acre campus
- 958 panels // 189,700 GSF
- 683 integrated windows
- Emulated terracotta for efficiency
- Integrated, pre-glazed panels
- Category 5 hurricane // 200 mph wind resistance
- Schedule shortened by 5 months



TESTING OVERVIEW

GateLite is engineered and tested to meet or exceed the following standards:

AIR BARRIER

- ASTM E2357 // Performance and Reliability of Air Barrier Assembly
- ASTM E283 // Air Leakage Rate Across a Building Material

FIRE RESISTANCE PERFORMANCE

- ANFPA 285 // Standard Fire Test Method for Evaluation of Fire Propagation Characteristics of Exterior Wall Assemblies Containing Combustible Components
- UL 263 // Fire test of building construction and materials (1 and 2 Hour Fire Ratings)
- ASTM E119 // Fire tests of building construction and materials
- UL 723 // Surface Burning Characteristics of Building Materials

WEATHER RESISTANT BARRIER

- ASTM E331 // Water penetration / static air pressure difference
- ASTM D5385 // Hydrostatic pressure resistance
- AAMA 501.1 // Standard Test Method for Hydrostatic Pressure Resistance of Waterproofing Membranes
- AAMA 503.3 // In-situ water test

SOUND

- ASTM E90 // Sound transmission loss
- ASTM E1332 // Rating outdoor-indoor sound attenuation

VAPOR BARRIER

- ASTM E96 // Water vapor transmission
- WUFI // Hydrothermal modeling

STRUCTURAL

- ASTM E330 // Structural performance of Exterior Windows, Doors, Skylights and Curtain Walls by Uniform Static Air Pressure Difference
- AAMA 501.4 // Seismic Movement

THERMAL

- THERM Modeling and Analysis
- ASTM C1363-11 Standard Test Method for Thermal Performance (Hotbox) Energy Study Provided By Glumac

EMBODIED CARBON

- Life Cycle Assessment Report Provided by Walter P. Moore
- Mix EPD Calculator Provided by Climate Earth (In Process)

CODE COMPLIANCE

- CA Title 24
- ASHRAE 90.1
- 2018 IBC
- 2018 IECC

Request a Design Consultation

Let's walk through how GateLite can seamlessly integrate into your upcoming project to turn your bold ideas into reality.

VISIT [WELLS.BUILD/CONTACT](https://wells.build/contact)

GateLite® is a registered trademark of Wells.



800.658.7049

GET INSPIRED AT [WELLS.BUILD](https://wells.build)